

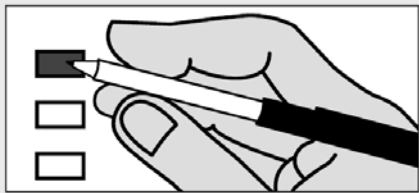
Vote Both Sides

STATE OF HAWAII - GENERAL ELECTION
November 04, 2014

Precinct 12-02

12000650100094

Instructions



Completely fill in the box to the left of your choice with a black or blue pen.
If you vote for more candidates/choices than allowed in a contest, your votes for that contest will not be counted.
Review both sides before voting.

Start voting here

Federal Contests

U.S. Senator Vacancy
Vote for Not More Than One (1)

- (R) CAVASSO, Cam
- (L) KOKOSKI, Michael
- (D) SCHATZ, Brian

U.S. Representative, Dist II
Vote for Not More Than One (1)

- (R) CROWLEY, Kawika
- (D) GABBARD, Tulsi
- (L) KENT, Joe

State Contests

Governor and Lieutenant Governor
Vote for Not More Than One (1)

- (R) AIONA, Duke
For GOVERNOR
AHU, Elwin P.
For LIEUTENANT GOVERNOR
- (L) DAVIS, Jeff
For GOVERNOR
MARLIN, Cynthia (Lahi)
For LIEUTENANT GOVERNOR
- (I) HANNEMANN, Mufi
For GOVERNOR
CHANG, Les
For LIEUTENANT GOVERNOR
- (D) IGE, David Yutaka
For GOVERNOR
TSUTSUI, Shan S.
For LIEUTENANT GOVERNOR

State Representative, Dist 12
Vote for Not More Than One (1)

- (R) POHLE, Richard H.
- (D) YAMASHITA, Kyle T.

**Office of
Hawaiian Affairs**

Maui Resident Trustee
Vote for Not More Than One (1)

- LINDSEY, Carmen Hulu
- WENDT, Mahealani

At-Large Trustee
Vote for Not More Than Three (3)

- AHU ISA, Lei (Leina'ala)
- AKANA, Rowena M.N.
- AKINA, Keli'i
- McINERNY, Harvey
- TRASK, Mililani B.
- WAIHEE, John D.

County of Maui

Mayor
Vote for Not More Than One (1)

- ARAKAWA, Alan M.
- PALTIN, Tamara (Tam)

Councilmember (East Maui)
Vote for Not More Than One (1)

- CARROLL, Bob
- NIKHILANANDA, Nick

Councilmember (West Maui)
Vote for Not More Than One (1)

- BUENCONSEJO, Ka'ala
- COCHRAN, Elle

**Councilmember
(Wailuku-Waihee-Waikapu)**
Vote for Not More Than One (1)

- BLACKBURN, Joseph G., II
- VICTORINO, Michael (Mike)

Councilmember (Kahului)
Vote for Not More Than One (1)

- GUZMAN, Don S.
- PONTANILLA, Joe

Councilmember (South Maui)
Vote for Not More Than One (1)

- COUCH, Don
- FITZPATRICK, John M.

Councilmember (Makawao-Haiku-Paia)
Vote for Not More Than One (1)

- MOLINA, Mike J.
- WHITE, Mike

Councilmember (Upcountry)
Vote for Not More Than One (1)

- BAISA, Gladys Coelho
- BRUCH, Courtney A.

Councilmember (Lanai)
Vote for Not More Than One (1)

- HOKAMA, Riki

Councilmember (Molokai)
Vote for Not More Than One (1)

- CRIVELLO, Stacy Helm

Vote Both Sides

FOLD AND TEAR HERE

No. 0000000



STATE OF HAWAII - GENERAL ELECTION
November 4, 2014

Thank You for Voting!

CONG	SEN	REP	COUN
II	7	12	A/L

BT: 25: D/P: 12: 1-6 (all)
SOH/M

STATE OF HAWAII - GENERAL ELECTION
November 4, 2014

No. 0000000

Vote Both Sides

STATE OF HAWAII - GENERAL ELECTION
November 04, 2014

Precinct 12-02

Amendments to the State Constitution Proposed by the Twenty-Seventh Legislature
The full text of these amendments is available for review. Ask an Election Official.

CON AMEND: Relating to Disclosure of Judicial Nominees
"Shall the judicial selection commission, when presenting a list of nominees to the governor or the chief justice to fill a vacancy in the office of the chief justice, supreme court, intermediate appellate court, circuit courts or district courts, be required, at the same time, to disclose that list to the public?"

YES
 NO

CON AMEND: Relating to Agricultural Enterprises
"Shall the State be authorized to issue special purpose revenue bonds and use the proceeds from the bonds to assist agricultural enterprises on any type of land, rather than only important agricultural lands?"

YES
 NO

CON AMEND: Relating to State Justices and Judges
"Shall the mandatory retirement age for all state court justices and judges be increased from seventy to eighty years of age?"

YES
 NO

CON AMEND: Relating to Early Childhood Education
"Shall the appropriation of public funds be permitted for the support or benefit of private early childhood education programs that shall not discriminate on the basis of race, religion, sex or ancestry, as provided by law?"

YES
 NO

CON AMEND: Relating to Dams and Reservoirs
"Shall the State be authorized to issue special purpose revenue bonds and use the proceeds from the bonds to offer loans to qualifying dam and reservoir owners to improve their facilities to protect public safety and provide significant benefits to the general public as important water sources?"

YES
 NO

Proposed Amendments to the Maui County Charter
The full text of these amendments is available for review. Ask an Election Official.

MAUI: Council: Affordable Housing Fund
Shall the Charter be amended to extend through fiscal year 2021 the requirement that two percent (2%) of the certified real property tax revenues be appropriated into an affordable housing fund to be used for the provision, protection, and expansion of affordable housing and suitable living environments for persons of very low to gap income?

YES
 NO

MAUI: Council: Penalties
Shall Section 13-10 of the Charter be amended to increase the current maximum penalty that may be imposed for violations of any provisions of the Charter and violations of ordinances and rules having the force and effect of law from \$1,000 or one year's imprisonment, or both, to \$25,000 or one year's imprisonment, or both?

YES
 NO

Proposed Amendment by Voter Initiative to the Maui County Code
The full text of this amendment is available for review. Ask an Election Official.

MAUI: Voter Initiative: Genetically Engineered Organisms
Should the proposed initiative prohibiting the cultivation or reproduction of genetically engineered organisms within the County of Maui, which may be amended or repealed as to a specific person or entity when required environmental and public health impact studies, public hearings, a two thirds vote and a determination by the County Council that such operation or practice meets certain standards, and which establishes civil and criminal penalties, be adopted for Maui County?

YES
 NO

EACSIML

Vote Both Sides

FOLD AND TEAR HERE

STATE OF HAWAII - GENERAL ELECTION
November 4, 2014

Thank You for Voting!

STATE OF HAWAII - GENERAL ELECTION
November 4, 2014



CONG	SEN	REP	COUN
11	7	12	A/L

BT: 25: D/P: 12: 1-6 (all)
SOH/M

12000650200004